

# Installation Guide: Toast Flex for Guest

**ADDING A GUEST DISPLAY TO YOUR TERMINAL?**      STEPS 1-5  
⌚ 5 min

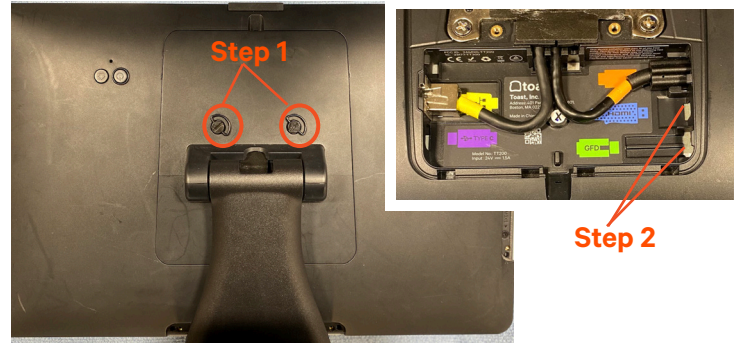
**INSTALLING 5FT DISPLAY CABLE?**      STEPS 1-11  
⌚ 10 min

## WHAT'S IN THE BOX?

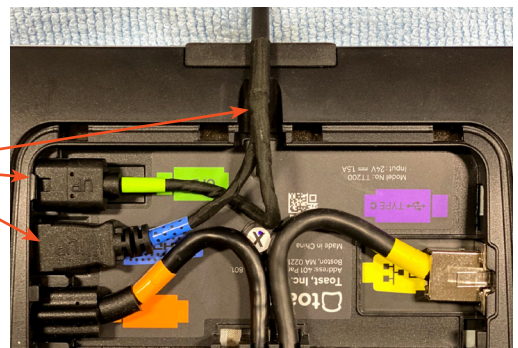
1 x Flex for Guest Wedge and 5 ft Extension Cable

**!** Before you begin turn off and unplug your Flex terminal from the outlet.

**1** Gently flip and place your Flex Terminal so that the display faces down and you have easy access to the thumb screws in back. Unscrew the two thumb screws and lift up to remove the back plate.



**2** Next unplug the green (GFD) and blue (HDMI) cables and remove this cable from the terminal by guiding it back through the stand or leaving it  
 → Note there may not be any cables plugged in. If nothing is plugged into the green and blue ports then move onto step 3



**3** Grab the free ends of 5 ft. Extension Cable and connect the green (GFD) and blue (HDMI) cables to the Flex Terminal. Make sure 'UP' text is facing up when plugging in. Place the cable through slot in the top of the terminal to make it easier to put the back plate on.

**4** Put the back plate back on the Flex Terminal. Put on at an angle and push down. Screw in the two thumb screws.



Step 4

**5** Flip the Flex terminal right side up and position your terminal and Toast Flex for Guest in your desired location.



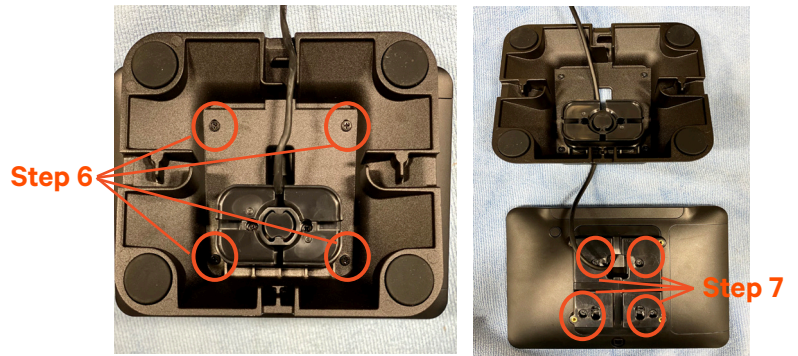
Step 5

**!** Continue to Step 6 on the back of this sheet ONLY if the other end of the 5ft extension cable is not attached to a Guest Display. DO NOT plug this into another cable this must plug directly into the Guest Display.



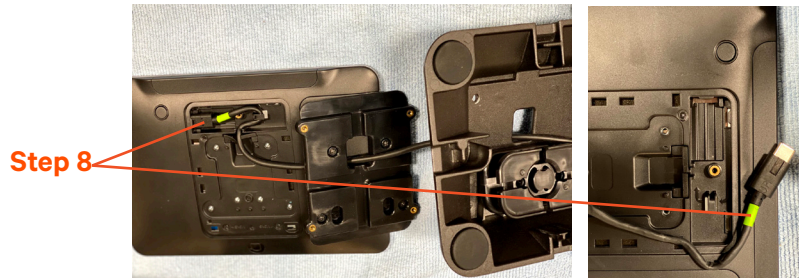
## Installation Guide: Toast Flex for Guest (continued)

6 Flip over your Flex for Guest Display and using a phillips screw driver unscrew these four screws and remove the metal stand.

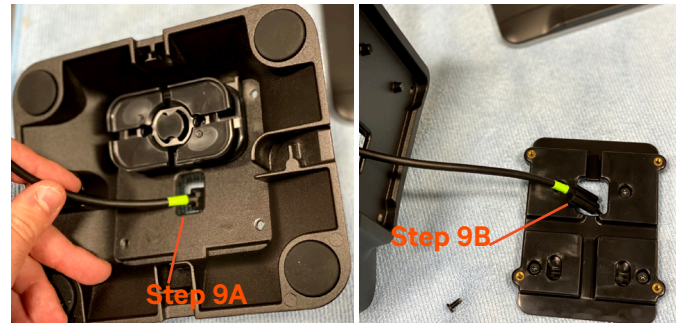


7 Next unscrew these four screws and remove the back plate.

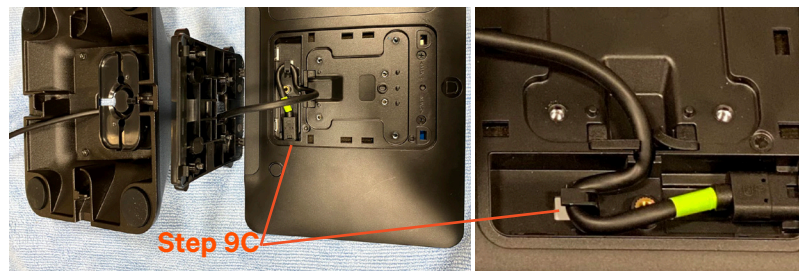
8 Unplug and remove the green (GFD). It is important to remove this cable when using the 5ft extension cable for best quality.



9 Thread the free end of the 5ft extension cable through the metal stand (9A) then the back plate (9B) and then plug it into the Guest Display (9C). Make sure 'UP' text is facing you and the cable goes the the slot and around the groove



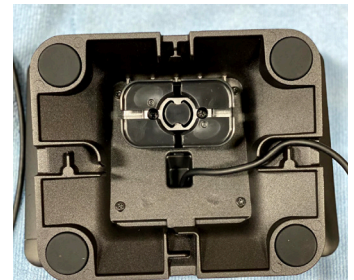
10 Finally, put the back plate back on the Guest Display and screw in the 4 screws (10A). Next put the metal stand back on the Guest Display and screw in the 4 screws (10B).



11 Flip the Flex terminal right side up and position your terminal and Toast Flex for Guest in your desired location.



Step 10A



Step 10B



Step 11

**CONGRATULATION!**

**You are ready to power on your Toast Flex for Guest!**

For help setting up your Guest Display visit

<https://central.toasttab.com/s/article/Guest-Facing-Display#Configuration>