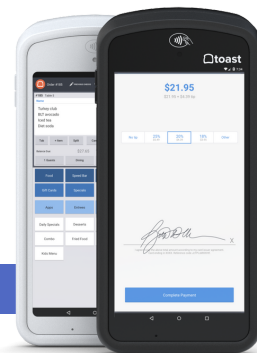




Replacing Your Toast Go™ 2 Card Reader

Follow these steps to swap out the card reader in your Toast Go 2.

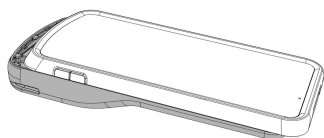
⚡ Before swapping out the card reader, please make sure to power off your device.



- 1 Using a screwdriver, remove the two screws at the bottom of your Toast Go 2. If possible, place these screws in a small cup or other safe container and set them aside to keep track of them while the device is open (screwdriver and extra screws are included).

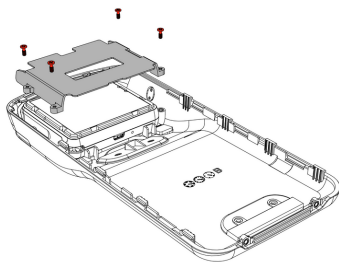


- 2 Push up and slide the back of the Toast Go 2 upward in order to open the device.



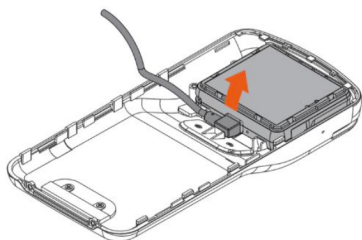
- 3 At the top of the Toast Go 2, loosen the four screws on the Card Reader cover.

⚠ **Note:** These screws will not come out and will remain attached to the Card Reader cover.

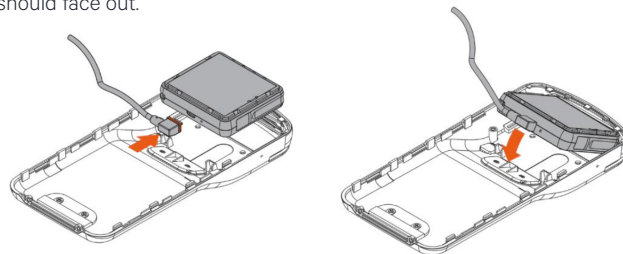


- 4 Remove the Card Reader cover and set it aside.

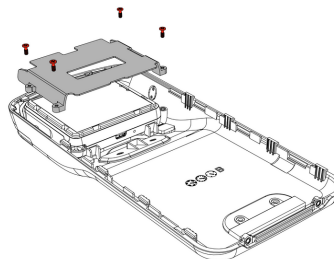
- 5 Gently remove the Card Reader and unplug the USB cable.



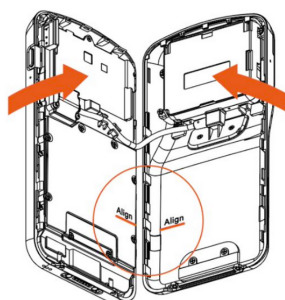
- 6 Plug the USB cable into the new Card Reader and gently pop the Card Reader back into place. The barcode on the card reader should face out.



- 7 Place the Card Reader cover over the new Card Reader and tighten the four screws.



- 8 Place the Toast Go 2 screen-down on a flat surface and align the interior stickers of the device.



- 9 Press both halves together, pushing down and sliding the back of the Toast Go 2 in a forward motion until you hear a click.

Re-insert the two screws at the bottom of the device.

